

## The Genus *Stethorus* WEISE (Coleoptera, Coccinellidae) of China<sup>1)</sup>

REN Shunxiang and PANG Xiongfei

Laboratory of Insect Ecology, South China Agricultural University,  
Guangzhou, 510642 P. R. China

**Abstract** Three subgenera and twenty-two species of the genus *Stethorus* WEISE from China are taxonomically studied. *Stethorus (Stethorus) sichuanensis* and *Stethorus (Parastethorus) baiyunshanensis* are described as new to science. *Stethorus (Parastethorus) truncatus* KAPUR is recorded for the first time in China. Keys to the subgenera and species of the genus *Stethorus* are given.

**Key words:** Coleoptera, Coccinellidae, *Stethorus*, China.

The genus *Stethorus* was originally proposed by WEISE (1885) as a subgenus of *Scymnus*, but in 1899 both WEISE and CASEY regarded it as a valid genus. This genus has usually been placed in the tribe Scymnini. DOBRZANSKY (1924) erected the tribe Stethorini for a single genus *Stethorus*, but KORSCHESKY (1931) synonymized Stethorini with Scymnini. KAPUR (1948), MADER (1955) and GORREAU (1974) agreed with KORSCHESKY's placement, but SASAJI (1968), PANG and MAO (1979), HOANG (1982), GORDON and CHAPIN (1983) and CHAZEAU, FURSCH and SASAJI (1989) followed DOBRZANSKY in considering Stethorini as a valid tribe, and we concur with this treatment. The Stethorini is easily separated from all other tribes of the Scymninae because the clypeus is not emarginate around the antennal bases, and the prosternum is arcuately produced in front, partly concealing the mouthparts.

The genus *Stethorus* has approximately 82 described species in the world. Its distribution is worldwide, feeding mainly on mites. Some of them have been reported to be valuable predators of phytophagous mites, and great attention is being paid to the genus *Stethorus* in respect to biological control.

All the type specimens to be designated in this paper are deposited in the Insect collection of South China Agricultural University, Guangzhou.

### Genus *Stethorus* WEISE

*Scymnus (Stethorus)* WEISE, 1885, 74.

*Stethorus*: WEISE, 1899, 64; CASEY, 1899, 135; KAPUR, 1948, 300; LIU, 1963, 86; PANG, 1966, 76; PANG & MAO, 1975, 418; BELICEK, 1976, 297; PANG & MAO, 1979, 29; GORDON & CHAPIN, 1983, 236;

1) This study is supported by the National Science Foundation of P. R. China (39000019).

BIELAWSKI, 1984, 329. Type species: *Stethorus punctillum* WEISE (by subsequent designation of KORSCHESKY, 1931).

*Nephopullus* BRETHERS, 1925, 167; KAPUR 1948, 300; GORDON & CHAPIN, 1983, 236. Type species: *Nephopullus darwini* BRETHERS (by subsequent designation of KORSCHESKY, 1931).

Body small, long, oblong-oval to round, moderately to strongly convex. Black except for antenna, mouthparts and legs usually yellow. Head transverse, subquadrangular, with large, moderately coarsely faceted eyes. Clypeus truncate or feebly emarginate anteriorly, anterolateral angle nearly rounded. Antenna short, 11-segmented, with first two segments large and oblong, terminal four wider, together forming a club. Maxillary palpus with apical segment oblong, obliquely truncate and narrowed toward apex. Prosternum without carinae, produced anteriorly to partly conceal mouthparts. Abdomen with postcoxal line on 1st abdominal sternum complete or incomplete. Tarsus trimerous or cryptotetramerous, tarsal claw bifid, inner claw shorter in male than in female. Male genitalia with median piece of tegmen symmetrical or asymmetrical. Female spermathecal capsule present or absent, genital plate small, not triangular.

#### Key to the Subgenera of *Stethorus*

- 1 (2) Siphon of male genitalia slender, long; median piece of tegmen slender, long; stub shorter than median piece . . . . . *Stethorus* WEISE.
- 2 (1) Siphon of male genitalia short; median piece of tegmen stout, short; stub longer than median piece.
- 3 (4) Lateral lobes of tegmen with many hairs and without short stout setal process on the inner region . . . . . *Allostethorus* IABLOKOFF-KHNZORIAN.
- 4 (3) Lateral lobes of tegmen with many short stout setal processes on the inner and a few long hairs on the apical regions . . . *Parastethorus* PANG et MAO.

#### Subgenus *Stethorus* WEISE

*Scymnus* (*Stethorus*) WEISE, 1885, 74.

*Stethorus*: CASEY, 1899, 135; IABLOKOFF-KHNZORIAN, 1972, 116; PANG & MAO, 1975, 419; 1979, 30; HOANG, 1982, 112; GORDON & CHAPIN, 1983, 236. Type species: *Stethorus punctillum* WEISE (by subsequent designation of KORSCHESKY, 1931).

Postcoxal line on 1st abdominal sternum complete. Male genitalia with siphon slender, elongate; median piece and lateral lobes of tegmen slender, usually elongate; stub usually shorter than median piece.

#### Key to the Species of *Stethorus* (*Stethorus*) of China

- 1 (14) Postcoxal line not arched beyond the middle of 1st abdominal sternum.
- 2 (5) Postcoxal line only extending about 1/3 length of 1st abdominal sternum.
- 3 (4) Lateral lobes of tegmen extending about 1/2 length of median piece . . . . .

- ..... *S. siphonulus* KAPUR.
- 4 (3) Lateral lobes of tegmen extending about 2/3 length of median piece . . . . .  
 ..... *S. loi* SASAJI.
- 5 (2) Postcoxal line usually extending to the middle of 1st abdominal sternum.
- 6 (9) Lateral lobes of tegmen with setae on apex extending about 2/3 length of  
 median piece.
- 7 (8) Subapical setae of lateral lobes reaching near their apices; base of siphonal  
 capsule without coloration . . . . . *S. cantonensis* PANG.
- 8 (7) Subapical setae of lateral lobes extending far beyond apices; base of  
 siphonal capsule with deep coloration . . . . . *S. aptus* KAPUR.
- 9 (6) Lateral lobes of tegmen with setae on apex equal to or beyond the length of  
 median piece.
- 10 (11) Lateral lobes of tegmen with hair process beyond the length of median piece;  
 apex of the hair process bifurcate; median piece curved nearly in an "S",  
 the apex bent up to form a hook, and with a thread-like appendix at the tip  
 ..... *S. yingjiangensis* CAO et XIAO.
- 11 (10) Lateral lobes of tegmen with hair process nearly equal to the length of median  
 piece.
- 12 (13) Lateral lobes of tegmen extending about 1/2 length of median piece; the hair  
 process on each apex of lateral lobes polyfurcate; siphon tapered on apical  
 1/4 . . . . . *S. sichuanensis* sp. nov.
- 13 (12) Lateral lobes of tegmen extending about 4/5 length of median piece; the hair  
 process on each apex of lateral lobes not furcate; siphon tapered in 1/2 to  
 apex. . . . . *S. punctillum* WEISE.
- 14 (1) Postcoxal line arched beyond middle of 1st abdominal sternum.
- 15 (16) Lateral lobes of tegmen extending beyond the length of median piece; siphon  
 tapered in 1/2 to apex and irregularly curved. . . . . *S. rani* KAPUR.
- 16 (15) Lateral lobes of tegmen equal to median piece in length; siphon tapered in 1/4  
 to apex . . . . . *S. longisiphonulus* PANG.

### 1. *Stethorus (Stethorus) siphonulus* KAPUR

*Stethorus siphonulus* KAPUR, 1948, 314; CHUNRAM & SASAJI, 1980, 476.

*Stethorus (Stethorus) siphonulus*: PANG & MAO, 1975, 419; 1979, 31.

*Distribution.* China (Fujian, Guangdong, Guangxi); Malaya; Thailand.

*Specimens examined.* [Guangxi]: 1 ♂, 3 ♀♀, Guilin, 15-IX-1987, PANG Xiongfei leg.

### 2. *Stethorus (Stethorus) loi* SASAJI

*Stethorus loi* SASAJI, 1968, 2.

*Distribution.* China (Taiwan).

No specimen has been examined.

### 3. *Stethorus (Stethorus) cantonensis* PANG

*Stethorus cantonensis* PANG, 1966, 77.

*Stethorus (Stethorus) cantonensis*: PANG & MAO, 1975, 419; 1979, 30; HOANG, 1982, 113.

*Distribution.* China (Guangdong, Fujian, Hubei); Vietnam.

*Specimens examined.* [Guangdong]: 1 ♂ (holotype), 1 ♀ (allotype), 3 ♂♂, 1 ♀ (paratypes), Guangzhou, III-1964; 5 ♂♂, 1 ♀ (paratypes), Guangzhou, IV-1964, PANG Xiongfei leg.; 1 ♂, Guangzhou, 12-IV-1989; 1 ♂, Guangzhou, 22-X-1989, REN Shunxiang leg.

### 4. *Stethorus (Stethorus) aptus* KAPUR

*Stethorus aptus* KAPUR, 1948, 314.

*Stethorus (Stethorus) aptus*: PANG & MAO, 1975, 419; 1979, 32.

*Distribution.* China (Guangdong, Hainan, Fujian, Zhejiang, Taiwan).

*Specimens examined.* [Guangdong]: 1 ♂, 1 ♀, Guangzhou, 21-IV-1989; 2 ♂♂, 2 ♀♀, Mt. Dinghu, 16-17-V-1989; 1 ♂, 1 ♀, Guangzhou, 29-VII-1989, REN Shunxiang leg. [Hainan]: 4 ♂♂, Haikou, 5-XI-1989; 2 ♂♂, 1 ♀, Haikou, 6-XI-1989, REN Shunxiang leg. [Taiwan]: 1 ♂, Shanwei, 2-V-1977; 1 ♀, Fenchihu, 11-IV-1977; 2 ♀♀, Fenchihu, 14-V-1977; 1 ♀, Taibei, 3-IV-1977; 1 ♀, Taibei, 5-IV-1977, J. KLAPPERICH leg.

### 5. *Stethorus (Stethorus) yingjiangensis* CAO et XIAO

*Stethorus (Stethorus) yingjiangensis* CAO et XIAO, 1984, 124; CAO, 1992, 112.

*Distribution.* China (Yunnan, Guizhou).

*Specimens examined.* [Guizhou]: 1 ♂, 1 ♀, Luo Dian, 10-VIII-1986, REN Shunxiang leg.

### 6. *Stethorus (Stethorus) sichuanensis* sp. nov.

(Fig. 1)

Length 1.19-1.27 mm, width 0.87-0.91 mm.

Short oval, widest in the middle, convex. Black, except for clypeus, antennae, mouthparts, tarsi, tibiae, and apical parts of femora testaceous; basal parts of femora castaneous and trochanter testaceous. Dorsal pubescence long, greyish. Head finely and sparsely punctate, pronotum with almost uniformly fine punctures, elytral punctures slightly coarser. Underside with greyish, short pubescence and with coarse punctures on poststernum. Postcoxal line complete, extending about 1/2 length of 1st ab-

dominal sternum, rounded (Fig. 1 A). Apex of sixth abdominal sternum rounded in male.

Male genitalia:— Siphon very long, narrow, tapering towards the apex, siphonal capsule very small, like a dark knob (Fig. 1 B). Lateral lobes of tegmen extending about 1/2 length of median piece, lateral lobes each with polyfurcate hair process nearly equal to the median piece in length; median piece of tegmen elongate, tubular and tapering at the apex which is slightly bent upwards and with a short brush-like appendix at its tip (Fig. 1 C).

Holotype: 1 ♂ (No. 890050), Zhong County, Sichuan, China, 23-VIII-1989, REN Shunxiang leg. Paratype: 1 ♂, same data as holotype.

*Remarks.* This new species is similar to *Stethorus* (*S.*) *rani* KAPUR and *S.* (*S.*) *yingjiangensis* CAO et XIAO, but is easily distinguished from the latter two by the lateral lobes of tegmen with hair processes nearly equal to median piece in length, and the apex of the sixth abdominal sternum rounded, devoid of any emargination. It is also

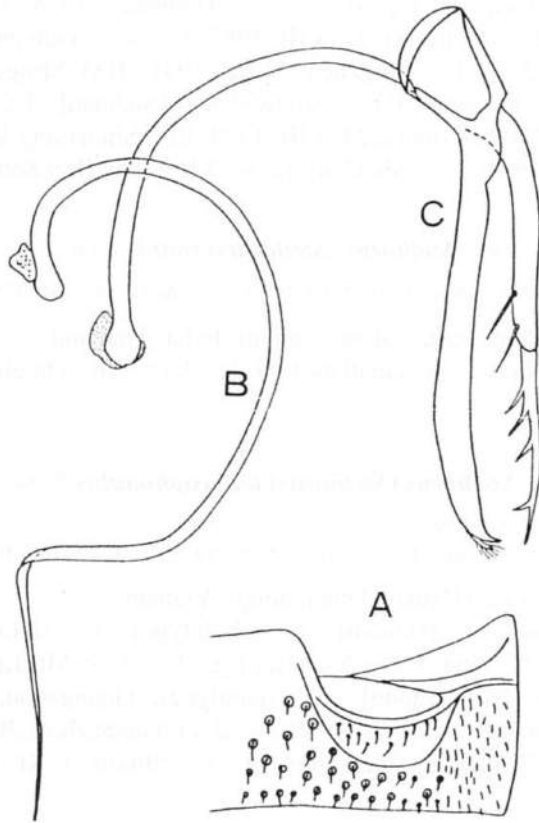


Fig. 1. *Stethorus* (*Stethorus*) *sichuanensis* sp. nov.; A, first abdominal sternum; B, siphon; C, tegmen.

related to *Stethorus (S.) longisiphonulus* PANG, but has the apex of median piece of tegmen with a short brush-like appendix and the siphon with a small, dark knob of siphonal capsule.

#### 7. *Stethorus (Stethorus) punctillum* WEISE

*Stethorus punctillum* WEISE, 1891, 281; CASEY, 1899, 136; KORSCHESKY, 1931, 112; KAPUR, 1948, 302; MADER, 1955, 867; LIU, 1963, 86; GORREAU, 1974, 35; BELICEK, 1976, 298; BIELAWSKI, 1984, 329.

*Stethorus (Stethorus) punctillum*: PANG & MAO, 1975, 419; 1979, 33; GORDON & CHAPIN, 1983, 270.

*Coccinella minima* ROSSI, 1794, 89 (not *Coccinella minima* MÜLLER, 1776, 65).

*Scymnus (Stethorus) minimus*: WEISE, 1885, 74.

*Coccinella pusilla* HERBST, 1794, 346 (not *Coccinella pusilla* MÜLLER, 1776, 65).

*Coccinella atra* ILLIGER, 1798, 413 (not *Coccinella atra* GMELIN, 1790, 1664).

*Distribution.* China (Beijing, Heilongjiang, Liaoning, Hebei, Gansu, Xinjiang, Shandong, Zhejiang, Jiangsu, Hubei, Sichuan, Guizhou, Guangxi, Fujian); Palearctic Region; North America (introduced from Europe).

*Specimens examined.* [Jiangsu]: 1 ♂, 2 ♀♀, Dongshan, 13-V-1978, LIAO Dingxi leg. [Guizhou]: 1 ♂, 2 ♀♀, Guiyang, 11-VIII-1987; 1 ♂, 4 ♀♀, Guiyang, 18-VIII-1987, PANG Xiongfei leg.; 2 ♂♂, 1 ♀, Qingzhen, 21-III-1991, TIAN Mingyi leg. [Guangxi]: 1 ♂, 3 ♀♀, Guilin, 23-IV-1987, PANG Xiongfei leg. [Sichuan]: 3 ♂♂, Zhong County, 23-VIII-1989; 1 ♂, Zhong County, 24-VIII-1989, REN Shunxiang leg. [Hubei]: 8 ♂♂, 1 ♀, Xiangxi, 5-VII-1989; 3 ♂♂, Shenlongjia, 16-VII-1989, REN Shunxiang leg.

#### 8. *Stethorus (Stethorus) rani* KAPUR

*Stethorus rani* KAPUR, 1948, 313; MADER, 1955, 1024; CHUNRAM & SASAJI, 1980, 475.

*Distribution.* China (Guangdong, Fujian); India; Thailand.

*Specimens examined.* [Guangdong]: 9 ♂♂, 3 ♀♀, Mt. Dinghu, I-1987, PANG Xiongfei leg.

#### 9. *Stethorus (Stethorus) longisiphonulus* PANG

*Stethorus longisiphonulus* PANG, 1966, 78.

*Stethorus (Stethorus) longisiphonulus*: PANG & MAO, 1975, 419; 1979, 32; HOANG, 1982, 115.

*Distribution.* China (Hainan, Guangdong); Vietnam.

*Specimens examined.* [Hainan]: 1 ♂ (holotype), 1 ♀ (allotype), 4 ♂♂, 1 ♀ (paratypes), Haikou, V-1964, PANG Xiongfei leg.; 1 ♂, 2 ♀♀, Mt. Limu, 10-XI-1989, REN Shunxiang leg. [Guangdong]: 1 ♂ (paratype), Guangzhou, III-1964, PANG Xiongfei leg.; 1 ♂, Guangzhou, 2-IV-1989; 1 ♂, 2 ♀♀, Guangzhou, 30-VII-1989; 3 ♂♂, Guangzhou, 14-III-1990, REN Shunxiang leg.; 1 ♂, Shixin, 3-XI-1981, ZHANG Jian leg.

Subgenus *Allostethorus* IABLOKOFF-KHNZORIAN

*Allostethorus* IABLOKOFF-KHNZORIAN, 1972, 121; PANG & MAO, 1975, 419; 1979, 34; HOANG, 1982, 117.

Type species: *Stethorus (Allostethorus) amurensis* IABLOKOFF-KHNZORIAN, 1972 (by original designation).

Postcoxal line on 1st abdominal sternum complete. Male genitalia with siphon short, stout; median piece of tegmen flattened, subtriangular or nearly quadrate; lateral lobes of tegmen short, stout; stub longer than median piece.

Key to the Species of *Stethorus (Allostethorus)* of China

- 1 (10) Postcoxal line reaching about 1/2 length of 1st abdominal sternum.
- 2 (3) Median piece of tegmen deeply bifurcate into two lobes .....  
..... *S. vietnamicus* HOANG.
- 3 (2) Apex of median piece of tegmen not furcate.
- 4 (5) Median piece of tegmen quadrate, apex of median piece even straight .....  
..... *S. shaanxiensis* PANG et MAO.
- 5 (4) Median piece of tegmen subtriangular in ventral aspect.
- 6 (7) Preapex of each lateral lobe of tegmen with a distinct expansion at inner surface .....  
..... *S. klapperichi* YU.
- 7 (6) Preapex of each lateral lobe of tegmen simple, without expansion.
- 8 (9) Outer side of siphonal apex with a small appendix .....  
..... *S. dongchuanensis* CAO et XIAO.
- 9 (8) Subapex of siphon distinctly swollen, provided with a rather long appendix which tapers towards a rounded tip. ....  
..... *S. chengi* SASAJI.
- 10 (1) Postcoxal line reaching about 2/3 length of 1st abdominal sternum.
- 11 (14) Apex of siphon complex.
- 12 (13) Subapex of siphon with a hook-like appendix. ....  
..... *S. binchuanensis* PANG et MAO.
- 13 (12) Apex of siphon with a small nodule-like appendix. ....  
..... *S. muriculatus* YU.
- 14 (11) Apex of siphon simple, bent outwards. ....  
..... *S. parapauperculus* PANG.

10. *Stethorus (Allostethorus) vietnamicus* HOANG

*Stethorus (Allostethorus) vietnamicus* HOANG, 1979, 11; 1982, 118; PU, 1990, 112.

*Distribution.* Vietnam; China (Guangxi, Hainan).

*Specimens examined.* [Hainan]: 4 ♂♂, Haikou, 6–XI–1989; 3 ♂♂, Haikou, 7–XI–1989, REN Shunxiang leg.; 1 ♂, Nada, 8–XI–1989, REN Shunxiang leg.; 2 ♂♂, Nada, 8–XI–1989, OU Zhuangjie leg.

11. *Stethorus (Allostethorus) shaanxiensis* PANG et MAO

*Stethorus (Allostethorus) shaanxiensis* PANG et MAO, 1975, 420; 1979, 35.

*Distribution.* China (Shaanxi, Hubei).

*Specimens examined.* [Shaanxi]: 1 ♂ (holotype), Mei County, VIII-1974, JIANG Yuanzheng leg. [Hubei]: 1 ♂, 2 ♀♀, Shenlongjia, 6-VII-1989; 1 ♂, 1 ♀, Shenlongjia, 14-VII-1989; 5 ♂♂, 1 ♀, Shenlongjia, 16-VII-1989; 4 ♂♂, Mt. Wudang, 18-VII-1989, REN Shunxiang leg.

#### 12. *Stethorus (Allostethorus) klapperichi* YU

*Stethorus (Allostethorus) klapperichi* YU, 1995, 125

*Distribution.* China (Taiwan).

*Specimens examined.* [Taiwan]: 1 ♂ (holotype), 1 ♀ (allotype), 2 ♂♂ (paratypes), Fenchihu, 10-VI-1977; 2 ♂♂ (paratypes), 28-IV-1977, J. KLAPPERICH leg.

#### 13. *Stethorus (Allostethorus) dongchuanensis* CAO et XIAO

*Stethorus (Allostethorus) dongchuanensis* CAO et XIAO, 1984, 124; CAO, 1992, 115.

*Distribution.* China (Yunnan).

No specimen has been examined.

#### 14. *Stethorus (Allostethorus) chengi* SASAJI

*Stethorus chengi* SASAJI, 1968, 4.

*Stethorus (Allostethorus) chengi*: PANG & MAO, 1975, 419; 1979, 34.

*Distribution.* China (Shaanxi, Hubei, Hunan, Sichuan, Taiwan).

*Specimens examined.* [Hubei]: 2 ♂♂, Xiangxi, 5-VII-1989; 2 ♀♀, Shenlongjia, 14-VII-1989; 1 ♂, Shenlongjia, 15-VII-1989; 4 ♂♂, 1 ♀, Shenlongjia, 16-VII-1989, REN Shunxiang leg. [Sichuan]: 1 ♂, Zhong County, 24-VIII-1989, REN Shunxiang leg. [Hunan]: 3 ♂♂, 1 ♀, Yueyang, 29-VIII-1989; 2 ♂♂, Zhangjiajie, 10-VII-1990; 2 ♂♂, Jishou, 16-VII-1990, REN Shunxiang leg.

#### 15. *Stethorus (Allostethorus) muriculatus* YU

*Stethorus (Allostethorus) muriculatus* YU, 1995, 126.

*Distribution.* China (Taiwan).

*Specimens examined.* [Taiwan]: 1 ♂ (holotype), 1 ♀ (allotype), 1 ♂, 4 ♀♀ (paratypes), Fenchihu, 13-VI-1977; 3 ♂♂, 3 ♀♀ (paratypes), Alishan, 10-VI-1977, J. KLAPPERICH leg.

#### 16. *Stethorus (Allostethorus) binchuanensis* PANG et MAO

*Stethorus (Allostethorus) binchuanensis* PANG et MAO, 1975, 419; 1979, 36; CAO, 1992, 113.

*Distribution.* China (Yunnan).



*Specimens examined.* 1 ♂ (holotype), 2 ♂♂ (paratypes), Binchuan, 10-V-1974, MAO Jinglong leg.

### 17. *Stethorus (Allostethorus) parapauperculus* PANG

*Stethorus parapauperculus* PANG, 1966, 79.

*Stethorus (Allostethorus) parapauperculus*: PANG & MAO, 1975, 419; 1979, 45; CAO, 1992, 114.

*Distribution.* China (Hainan, Guangdong, Fujian, Guangxi, Yunnan).

*Specimens examined.* [Hainan]: 1 ♂ (holotype), Nada, V-1964; 1 ♀ (allotype), Nada, V-1964; 5 ♂♂, 1 ♀ (paratypes), Haikou, Nada, V-1964, PANG Xiongfei leg.; 1 ♂, 2 ♀♀, Haikou, 5-XI-1989, REN Shunxiang leg. [Guangxi]: 1 ♂, 4 ♀♀, Nanling, 29-VII-1985; 1 ♂, Longguang, 31-VII-1985; 1 ♀, Nanling, 4-VIII-1985; 2 ♀♀, Nanling, 5-VIII-1985, PANG Xiongfei leg.

*Remarks.* *Stethorus hirashimai* described by SASAJI (1968) was based on four female specimens. It is very similar to *Stethorus parapauperculus* PANG, 1966, in the characters of male genitalia described by YANG and WU (1972).

### Subgenus *Parastethorus* PANG et MAO

*Stethorus (Parastethorus)* PANG et MAO, 1975, 421; 1979, 35; HOANG, 1982, 117; GORDON & CHAPIN, 1983, 272. Type species: *Stethorus (Parastethorus) yunnanensis* PANG et MAO (by original designation).

Postcoxal line on 1st abdominal sternum incomplete or complete. Male genitalia with siphon short, stout; median piece of tegmen with lateral margins subparallel, dorsoventrally flattened; lateral lobes of tegmen short, oblong-oval; stub longer than median piece.

### Key to the Species of *Stethorus (Parastethorus)* of China

- 1 (2) Postcoxal line on 1st abdominal sternum complete . . . . . *S. indira* KAPUR.
- 2 (1) Postcoxal line on 1st abdominal sternum incomplete.
- 3 (4) Postcoxal line reaching about 2/3 length of 1st abdominal sternum . . . . .  
 . . . . . *S. baiyunshanensis* sp. nov.
- 4 (3) Postcoxal line reaching about 3/4 length of 1st abdominal sternum.
- 5 (6) Median piece of tegmen rounded at the apex, with two small subtriangular processes . . . . . *S. guangxiensis* PANG et MAO.
- 6 (5) Median piece of tegmen rounded at the apex, with a deep semicircular emargination.
- 7 (8) Lateral lobes of tegmen elongate, as long as median piece . . . . .  
 . . . . . *S. truncatus* KAPUR.
- 8 (7) Lateral lobes of tegmen elongated oval, reaching about 2/3 length of median piece . . . . . *S. yunnanensis* PANG et MAO.

18. *Stethorus (Parastethorus) indira* KAPUR

*Stethorus indira* KAPUR, 1950, 148; CHUNRAM & SASAJI, 1980, 475.

*Stethorus (Parastethorus) indira*: CAO, 1992, 116.

*Distribution.* China (Yunnan, Guangxi); India; Thailand.

*Specimens examined.* [Guangxi]: 1 ♂, Guilin, 10-X-1986, PU Tianshen leg.

19. *Stethorus (Parastethorus) baiyunshanensis* sp. nov.

(Fig. 2)

Length 1.02 mm, width 0.81 mm.

Short oval, widest in the middle, moderately convex. Black, except for antennae and mouthparts yellow; legs yellow except for femora brown. Dorsal pubescence short, yellowish white. Head finely and sparsely punctate, pronotal punctures slightly coarser than head; elytron with rather coarse and dense punctures. Underside with greyish, short, sparse pubescence and with rather coarse and fairly close punctures. Postcoxal line incomplete, extending about 2/3 length of 1st abdominal sternum, rounded (Fig. 2 A). Apex of sixth abdominal sternum truncate in male.

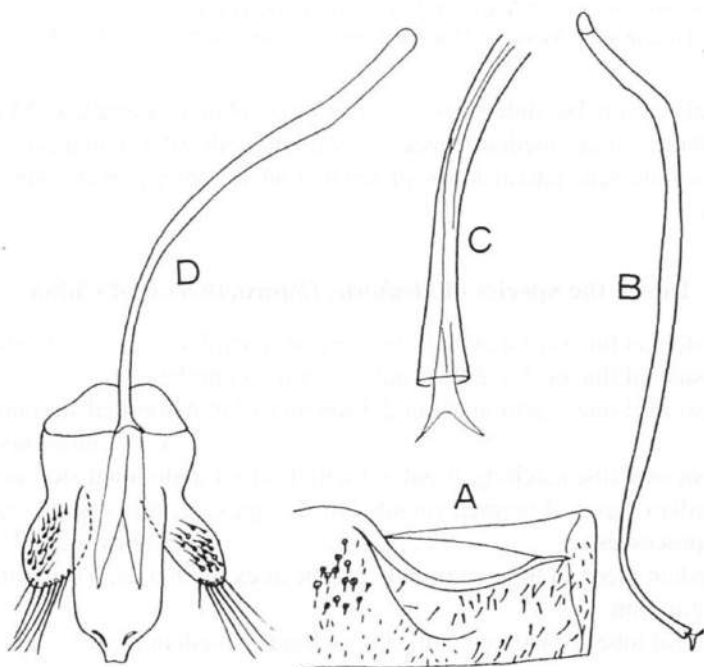


Fig. 2. *Stethorus (Parastethorus) baiyunshanensis* sp. nov.; A, first abdominal sternum; B, siphus; C, apex of siphus; D, tegmen.

Male genitalia:— Siphon slender, the apex bent outwards with a bifurcate appendix (Fig. 2 B–C). Lateral lobes of tegmen oblong-ovate, extending about 2/3 length of median piece, with many short, stout seta-like processes in the inner and with a few long hairs in the apical regions; median piece of tegmen elongate, nearly straight at its tip (Fig. 2 D).

Holotype: 1 ♂ (No. 890206), Mt. Baiyun, Guangzhou, Guangdong, China, 2–IV–1989, REN Shunxiang leg.

*Remarks.* This species is similar to *Stethorus (Parastethorus) guangxiensis* PANG et MAO, but is easily distinguished from the latter by the postcoxal line extending about 2/3 length of the 1st abdominal sternum and the median piece of tegmen nearly straight at its tip, devoid of two small subtriangular processes.

#### 20. *Stethorus (Parastethorus) guangxiensis* PANG et MAO

*Stethorus (Parastethorus) guangxiensis* PANG et MAO, 1975, 421; 1979, 37.

*Distribution.* China (Guangxi, Hubei).

*Specimens examined.* [Guangxi]: 1 ♂ (holotype), Guilin, 10–VI–1974; 1 ♂ (paratype), Guilin, 8–VI–1974, MAO Jinglong leg. [Hubei]: 1 ♂, Xiangxi, 5–VII–1989, REN Shunxiang leg.

#### 21. *Stethorus (Parastethorus) truncatus* KAPUR

*Stethorus truncatus* KAPUR, 1948, 315.

*Distribution.* Malaya; China (Guangdong; new record).

*Specimen examined.* [Guangdong]: 1 ♂, Guangzhou, 22–X–1989, REN Shunxiang leg.

#### 22. *Stethorus (Parastethorus) yunnanensis* PANG et MAO

*Stethorus (Parastethorus) yunnanensis* PANG et MAO, 1975, 421; 1979, 36; CAO, 1992, 115.

*Distribution.* China (Yunnan).

*Specimens examined.* [Yunnan]: 1 ♂ (holotype), Simao, 17–IV–1974; 1 ♂ (paratype), Binchuan, 10–V–1974, MAO Jinglong leg.

### 要 約

任 順祥・龐 雄飛：中国のダニクイヒメテントウ属。—— 中国からこれまでに知られた、3 亜属 22 種のダニクイヒメテントウ類をまとめた。うち 2 種は新種で、それぞれ *Stethorus sichuanensis* および *S. baiyunshanensis* と命名した。また、*S. truncatus* KAPUR を、中国から初めて記録した。

## References

- BELICEK, J., 1976. Coccinellidae of western Canada and Alaska with analyses of the transmontane zoogeographic relationships between the fauna of British Columbia and Alberta (Ins. Col. Cocc.). *Quaest. ent.*, **12**: 283–409.
- BIELAWSKI, R., 1984. Coccinellidae (Col.) of Mongolia. *Annls. zool. Warsz.*, **38**: 281–460.
- CAO, C. Y., 1992. Yuannan Coccinellidae. 242 pp. Yuannan Science & Technique Press, Kunming.
- & N. N. XIAO, 1984. New species of Coccinellidae from Yunnan, China. *Entomotax.*, **6**: 109–132.
- CASEY, T. L., 1899. A revision of the American Coccinellidae. *J. N. Y. ent. Soc.*, **7**: 71–163.
- CHAZEAU, J., H. FURSCH & H. SASAJI, 1989. Taxonomy of Coccinellids. *Coccinella*, (1): 6–8.
- CHUNRAM, S., & H. SASAJI, 1980. A contribution to the Coccinellidae (Col.) of Thailand. *Orient. Ins.*, **14**: 473–491.
- DOBZHANSKY, T., 1924. Die weiblichen Generationsorgane der Coccinelliden als Artmerkmal betrachtet (Col.). *Ent. witt.*, **22**: 18–27.
- GMELIN, J. F., 1790. Linnae's Systema Naturae, edit. 13: 1517–2224.
- GORDON, R. D., & E. A. CHAPIN, 1983. A revision of the New World species of *Stethorus* WEISE (Col. Cocc.). *Trans. Am. ent. Soc.*, **109**: 229–276.
- GORREAU, J. M., 1974. Systématique de la tribu des Scymnini (Cocc.). *Annls. Zool. Ecol. anim.*, **1974**: 221 pp. Paris.
- HERBST, J. F. W., 1797. Natursystem aller bekannten in- und ausländischen Käfer, **7**: 1–346.
- HOANG, D. N., 1979. Three new species of the subfamily Scymninae (Col. Cocc.) from the fauna of Vietnam. *Biol. Rev.*, **1**: 11–15.
- 1982. Coccinellidae of Vietnam (Ins. Col.). Part I. 211 pp. Hanoi.
- IABLOKOFF-KHINZORIAN, S. M., 1972. New species of Coccinellidae from the USSR. *Akad. Nauk Armyan. SSR, Doklady*, **55**: 116–121.
- ILLIGER, J. C. W., 1978. In KUGELANN, Verzeichniss der Käfer Preussens, ausgearbeitet von ILLIGER, Halle. 510 pp.
- KAPUR, A. P., 1948. On the Old World species of the genus *Stethorus* WEISE (Col. Cocc.). *Bull. ent. Res.*, **9**: 297–320.
- 1950. A new species of *Stethorus* WEISE from India (Col. Cocc.). *Proc. r. ent. Soc. Lond.*, **19**: 148–149.
- KORSCHESKY, R., 1931. Coccinellidae. I. In JUNK, W., & S. SCHENKLING (eds.), *Coleopt. Cat.*, pars 118, 224 pp. Berlin.
- LIU, C. L., 1963. Coleoptera: Coccinellidae I. 101 pp. Beijing.
- MADER, L., 1955. Evidenz der palaearktischen Coccinelliden und ihrer Aberrationen in Wort und Bild. II. *Ent. Arb. Mus. Frey*, **6**: 764–1037.
- MÜLLER, O. F. 1776. Zoologiae Danicae prodromus, seu animalium Daniae et Norwegiae indigenarum characters nomina, et synonyma inprimis popularium. 32 pp. Hafniae, Hallager.
- PANG, X. F., 1966. New species of *Stethorus* (Col.: Cocc.) from Canton, China. *Acta zootax. sin.*, **3**: 76–81.
- 1979. Coleoptera: Coccinellidae II. 170 pp. Beijing.
- & J. L. MAO, 1975. The natural enemies of phytophagous mites. *Acta ent. sin.*, **18**: 418–424.
- PU, T. S., 1990. *Stethorus (Allostethorus) vietnamicus* HOANG — new record from China. *Entomotax.*, **12**: 112.
- ROSSI, P., 1794. Mantissa insectorum. Exhibens species nuper in Etruria colectas, Adjectis Faunae illustrationibus ac emendationibus. 154 pp. Pisa, Polloni.
- SASAJI, H., 1968. A revision of the Formosan Coccinellidae (II). Tribes Stethorini, Aspidimerini and Chilocorini (Col.). *Etizenia, Fukui*, (32): 1–24.
- WEISE, J., 1885. Bestimmungstabellen der europäischen Coleopteren. II. Heft. Coccinellidae. II. Auf-

- lage. Mit Berücksichtigung der Arten aus dem nördlichen Asien. 83 pp. Modling.
- WEISE, J., 1891. Neue Coccinelliden. *Dt. ent. Z.*, **1891**: 282–288.
- 1899. Coccinelliden aus Deutsch-Ostafrika. *Arch. Naturg.*, **65**: 49–70.
- YANG, C. T., & R. H. WU, 1972. Notes on some Coccinellidae of Taiwan. *Plant Prot. Bull. Taiwan*, **20**: 106–116.
- YU, G., 1995. The Coccinellidae (excluding Epilachninae) collected by J. KLAPPERICH in 1977 on Taiwan. *Spixiana*, **18**: 123–144.

---

*Elytra, Tokyo*, **24** (2): 329–330, November 15, 1996

## Discovery of *Aesalus yongi* (Coleoptera, Lucanidae) from Borneo

**Kunio ARAYA**

Graduate School of Human and Environmental Studies,  
Kyoto University, Yoshida, Sakyo, Kyoto, 606–01 Japan

and

**Abang Abdul HAMID**

Forest Department Sarawak, Wisma Sumbar Alam,  
93660 Kuching, Sarawak, Malaysia

*Aesalus yongi* was originally described on the basis of several specimens collected at the Gombak Valley, near Kuala Lumpur of the Malay Peninsula (ARAYA, 1993), but no additional specimens have been recorded since then. Recently, three specimens of this species were found out in the entomological collections of the Forest Research Section of the Forest Department Sarawak, Malaysia. They were kept in a large collections of beetle materials from the Lambir Hills National Park, near Miri, northeast Sarawak. Here we will report the new record of this interesting lucanid beetle from Borneo. In the following description, PEL denotes pronotum-elytra length, and EW elytra width.

*Specimens examined.* 1 ♂, Lambir Hills National Park, Miri Division, Sarawak, East Malaysia (60 m in altitude), 2~3–XII–1994; 1 ex., ditto, 9~10–VI–1994; 1 ex., ditto, 7~8–VIII–1994.

*Notes.* All of these Bornean materials were captured by using ultra violet light-traps set in a tropical lowland dipterocarp forest. This fact indicates that this species is an active nocturnal flier. The Bornean individuals are almost identical with the type specimens of the Malay Peninsula in both their external (Fig. 1) and peculiar bottle-shaped male genitalic morphologies